

Building Healthier Lives Together

OUR STRATEGY 2019-2024

About Us

Access Health and Community (AccessHC) has a proud 150 year history of providing healthcare and social support. As the oldest community health service in Australia; we have always focussed on providing services to people and families in social and financial need.

Our services are available to everyone in the community. The main locations are in the Cities of Boroondara, Manningham and Yarra.

Our Values

Equity

We believe everyone is entitled to good health.

Collaboration

We work together to achieve our goals.

Respect

We work with courtesy and include others.

Innovation

We drive innovation for better care.

Quality


We strive to be the best at what we do.

We can help you with:



myagedcare

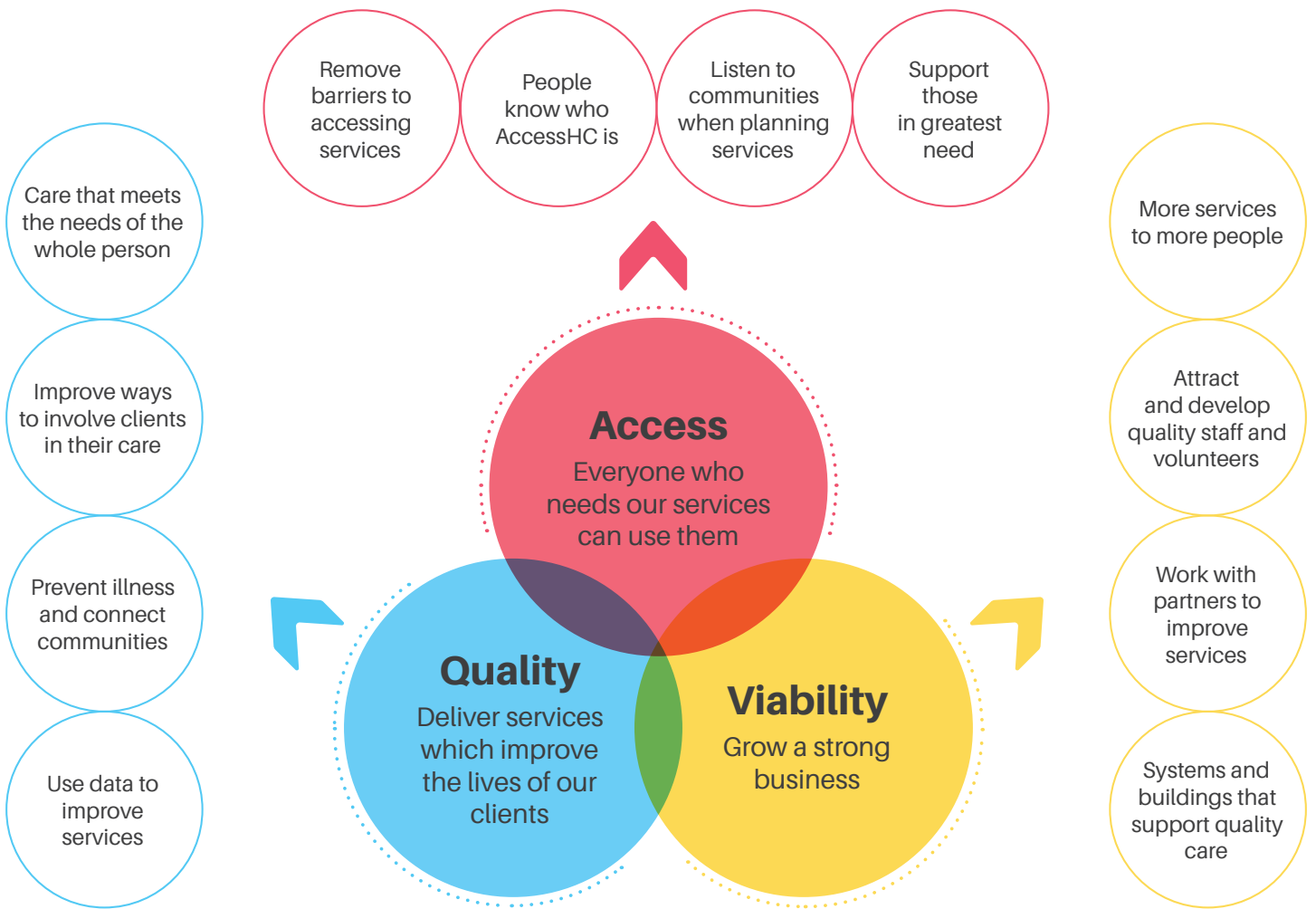
Our Services

	Medical	Doctors Nursing
	Mental Health	Alcohol & other drug services Counselling & psychology Youth mental health (headspace)
	Adult & Child Allied Health	Physiotherapy Occupational therapy Speech pathology Podiatry Dietetics Audiology Diabetes education Developmental Psychology Early Childhood Intervention
	Dental	Dentists Dentures Education Oral health care
	Health Promotion	Health promotion Community engagement & networks
	Support Services	Carer support Community information & referral Integrated family services Volunteer transport Intake Camcare wellbeing services Emergency Relief
	Community Programs	Men's Shed Neighbourhood houses Childcare Social groups Exercise groups

The health system is changing and so are the communities we work in. AccessHC’s funding model is changing and this affects the way people access our services. The community is ageing quickly and our local communities are becoming more diverse. This will shift how we deliver services because demand for care will be greater than the available services.

In the future, we will:

- focus more on preventing illness and giving people the skills to look after their own health.
- work closer with our partners like local councils and hospitals.
- work to remove barriers to people and families accessing our services.



We acknowledge the Wurundjeri people, who are the traditional custodians of the land on which we work. We pay our respects to Wurundjeri Elders past, present and emerging and extend that respect to other Aboriginal and Torres Strait Islander people. We value their ongoing contribution to the cultural heritage of this land.



For more information about AccessHC, please visit accesshc.org.au or call (03) 9810 3000.